

OPERON HEALTHCARE CATALOGUE

..... 2020 Collection



About

Operon specialized in medical and healthcare equipment that can be customized and applied across medical/ non-medical, geriatric and home consumer fields. We have established our links with local and private hospitals, SMEs, Universities, and hospices as a robust primary anchor, we aim to continually expand our portfolio of specialities and leadership area of activities. Our company is co-founded by four Directors who emphasizes on the importance of caring for the community through preservation of life with grace and dignity.

We aim to be the partner of choice and one-stop solution for government/ private organizations and corporations. we hope to empower and preserve the dignity between people and caregivers, in response to the needs of the community through close collaboration with our partners by providing exceptional industrial -first healthcare products and equipment; by leveraging on automation. The evolving needs of the world has driven the cogs of productivity more so now, than ever. It is our goal to introduce innovative products and equipment to replace traditional work processes, through a combination of technology and feedback supported by real world problems- we look towards decreasing mental workloads, sunken costs. And freeing up precious resources for better resource management increasing safety margins of operations and task productivity.

With our dedicated and diverse team will establish close working relationships with customers through our relevant expertise to deliver superior quality products, with the best possible pricing with no hidden costs. we have highly experienced individuals specializing in distribution channels, we carry ready stocks of our products and our close relations with our vendors allow us to have extremely competitive lead times over others. In addition, we respond to customers within 24 hours to address concerns and queries.

We have a tendering capacity of up to \$1million (SGD), given our S5 financial grading awarded by Crimsonlogic Pte Ltd. We carry the following supply heads:

- 1. EPU/HEQ/10 Domestic Equipment & Supplies**
- 2. EPU/LAB/30 Laboratory Equipment and Accessories**
- 3. EPU/SPE/10 Sports, Recreational Equipment and Supplies**
- 4. EPU/SGI/27 Surgical Consumables and Instruments**
- 5. EPU/CAA/10 Textiles, Clothing and Accouterments**
- 6. EPU/SER/46 Cleaning Services**

Content's



00 Laboratory

- Serological Pipettes
- Centrifuge Tubes
- Solution Reservoirs
- Micro-tubes
- Cryogenic
- Specimen Containers
- Inoculating Loops & Cell Spreaders
- Transport Swabs
- Transfer Pipettes

- Culture Tubes & Transport Tubes
- Tube Stoppers
- Storage Boxes and Racks
- Petri Dishes
- Culture Plates
- Weighing Boats
- Autoclave Bags
- Pipette Tips
- Glass Tubes / Vials & Caps
- Storage Boxes for Slides

00 Disinfectant

- 75% Alcohol Disinfectants
- Moisturing Hand Disinfectants

00 Commodes

- Toilet Aids
- Walking Aids
- SMART Auxiliary Aids

00 Hospital Bedding

- Manual Multi-Functional Beds
- Electric Multi-Functional Beds

00 Consumables

- Contact-less Thermometers
- Dispensers with Thermometer Function
- Hand Splint
- Knee Braces
- Back Braces
- Adult Diapers

00 Antimicrobial Coating

- Metamaterial Antiviral & antimicrobial coating

LABORATORY





Serological Pipettes

Cat No. 199011

- Pipettes are color coded according to the international standards to simplify identification.
- Pipettes are supplied with gamma radiation, available with bulk package or in a paper/plastic bag.



Standing Centrifuge Tubes

Cat No. 731104F

- 50 ml Free Standing
- Cap Material : HDPE
- Leak Proof
- Bulk Order Available



Conical-bottom Centrifuge Tubes

Cat No. 932104F

- 50 ml Conical Bottom
- Cap Material : HDPE
- Leak Proof
- Bulk Order Available



Specimen Containers, with Spoon

Cat No. 1322104

- 30 ml
- Ideal for Faecal sampling
- For in vitro use only



Conical-bottom Centrifuge Tubes

Cat No. 1534117F

- 15 ml Conical Bottom
- Cap Material : HDPE
- Leak Proof
- Bulk Order Available



Solution Reservoirs

Cat No. 19P8010

- Tcunused reagents and solutionsiff of
- Available in 10/25/50/100 ml variants



Pharmacy Vials
Cat No. 3190108

- Available in reversible and twist caps
- Comes in 30/50/60/80/120 ml



Microtubes
Cat No. 35100N

- Available in snap or safe-lock caps
- Clear molded graduations
- RNase, DNase, DNA and Pyrogen free upon request

PCR Tubes
Cat No. 4537220

- Available in single variants
- Ultra thin wall for precise thermal transfer
- Autoclavable
- RNase, DNase, DNA and Pyrogen free upon request



**Microtubes, Screw Cap
Cat No. 4738120N**

- Available in 0.5/1.5/2 ml variants
- Autoclavable
- Ideal for sample processing and storage application



**Cryo Vials
Cat No. 5139300-1**

- External Thread
- Self Standing
- 1.2 ml
- Withstand up to -196°
(gas phase of liquid nitrogen only)



**Cryo Vials
Cat No. 5239300-2R**

- External Thread
- Round Bottom
- 2.0 ml
- Withstand up to -196°
(gas phase of liquid nitrogen only)



**Cryo Vials
Cat No. 5339300-2**

- External Thread
- Self Standing
- 2.0 ml
- Withstand up to -196°
(gas phase of liquid nitrogen only)



**Cryo Vials
Cat No. 5439300-3**

- External Thread
- Self Standing
- 3.0 ml
- Withstand up to -196°
(gas phase of liquid nitrogen only)



**Cryo Vials
Cat No. 5539300-4**

- External Thread
- Self Standing
- 4.0 ml
- Withstand up to -196°
(gas phase of liquid nitrogen only)



**Cryo Vials
Cat No. 5639300-5**

- External Thread
- Self Standing
- 5.0 ml
- Withstand up to -196°
(gas phase of liquid nitrogen only)



**Cryo Vials
Cat No. 5739400-1**

- Internal Thread
- Self Standing
- 1.2 ml
- Withstand up to -196°
(gas phase of liquid nitrogen only)



**Cryo Vials
Cat No. 5839400-2R**

- Internal Thread
- Round Bottom
- 2.0 ml
- Withstand up to -196°
(gas phase of liquid nitrogen only)



Cryo Vials
Cat No. 5939400-2

- Internal Thread
- Self Standing
- 2.0 ml
- Withstand up to -196°
(gas phase of liquid nitrogen only)



Cryo Vials
Cat No. 6039400-4R

- Internal Thread
- Round Bottom
- 4.0 ml
- Withstand up to -196°
(gas phase of liquid nitrogen only)



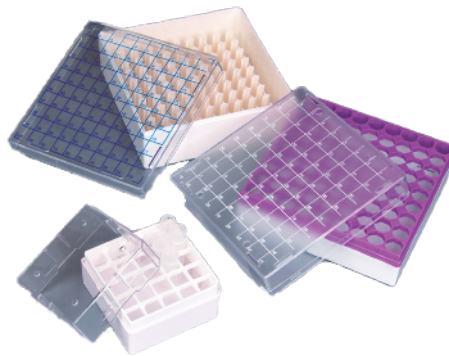
Cryo Vials
Cat No. 6139400-4

- Internal Thread
- Self Standing
- 4.0 ml
- Withstand up to -196°
(gas phase of liquid nitrogen only)



Cryo Vials
Cat No. 6239400-5R

- Internal Thread
- Round Bottom
- 5.0 ml
- Withstand up to -196°
(gas phase of liquid nitrogen only)



Cryo Vial Storage Box
Cat No. 6391325

- 25/81/100 place well
- Fits 1ml or 2ml tubes
- Poly-carbonate



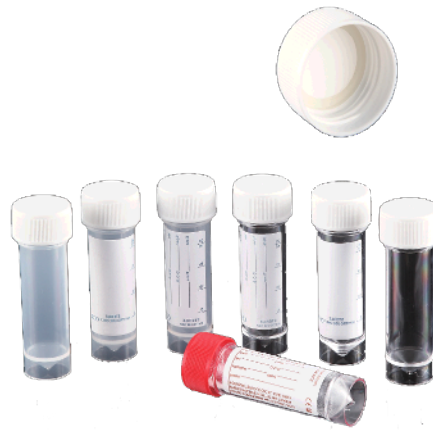
Freezing Cardboard Storage Box
Cat No. 6691816

- 16/49/64/81/100 place well
- Fits 17mm or 30mm tubes for 16 and 49 place well respectively
- Fits 2" or 3" tubes for 64/81/100 place well



Specimen Container, Bijou
Cat No. 7422500

- Screw Cap
- 7 ml
- Comes in printed label or without labels
- Available in boric acid variant



Specimen Container
Cat No. 8022100

- Screw Cap
- 30 ml
- Comes in printed label or without labels
- Available in boric acid variant



Specimen Container
Cat No. 8822203

- Screw Cap
- 60 ml
- Comes in printed label or without labels
- Available in boric acid variant



Metal Specimen Container
Cat No. 9722600

- Flowed Seal Inert Liner Cap
- 100 ml
- Comes in printed label or without labels



Metal Specimen Container
Cat No. 10022300

- Flowed Seal Inert Liner Cap
- 150 ml
- Comes in printed label or without labels



Metal Specimen Container
Cat No. 10322400

- Flowed Seal Inert Liner Cap
- 250 ml
- Comes in printed label or without labels



Microbiology / Urinalysis
Specimen Container
Cat No. 10623210

- Screw Cap
- 3 oz / 90 ml
- Security tab
- Available without labels



Microbiology / Urinalysis
Specimen Container
Cat No. 11023200

- Screw Cap
- 4 oz / 120 ml
- Security tab
- Available without labels



Sputum Specimen Container
Cat No. 11426100

- 30 ml
- Comes in printed label or without labels
- Cups and caps pack separately



Histology Specimen Container
Cat No. 11828100

- Made of non-cytotoxic polypropylene
- Cap Material : HDPE
- 20 ml
- Graduated on 3 sides



Histology Specimen Container
Cat No. 11928200

- Made of non-cytotoxic polypropylene
- Cap Material : HDPE
- 40 ml
- Graduated on 3 sides



Histology Specimen Container
Cat No. 12028300

- Made of non-cytotoxic polypropylene
- Cap Material : HDPE
- 60 ml
- Graduated on 3 sides



Histology Specimen Container
Cat No. 12128400

- Made of non-cytotoxic polypropylene
- Cap Material : HDPE
- 90 ml
- Graduated on 3 sides



Histology Specimen Container
Cat No. 12228500

- Made of non-cytotoxic polypropylene
- Cap Material : HDPE
- 120 ml
- Graduated on 3 sides



Histology Specimen Container
Cat No. 12328600

- Made of non-cytotoxic polypropylene
- Cap Material : HDPE
- 250 ml
- Graduated on 3 sides



Histology Specimen Container
Cat No. 12428700

- Made of non-cytotoxic polypropylene
- Cap Material : HDPE
- 500 ml
- Graduated on 3 sides



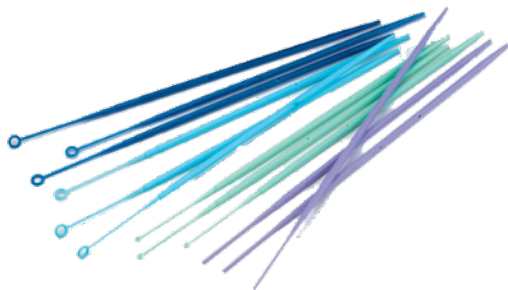
Histology Specimen Container
Cat No. 12528800

- Made of non-cytotoxic polypropylene
- Cap Material : HDPE
- 1000 ml
- Graduated on 3 sides



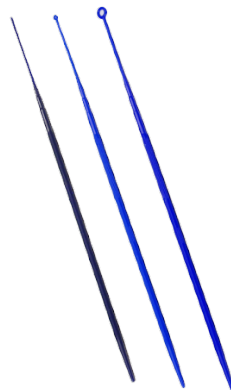
Histology Specimen Container
Cat No. 12528800

- Made of polypropylene or polystyrene
- Available in spout or wide-mouth designs
- 180 ml
- Graduated in oz and ml for easy reading
- Comes with or without paper lids



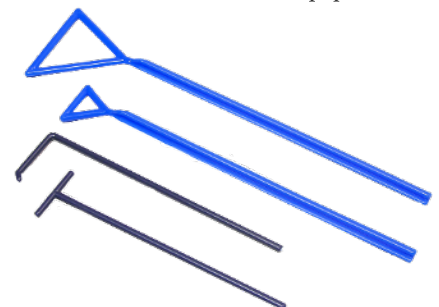
Plastic Inoculating Loops and Needles
Cat No. 13041111

- Made of ABS plastic or Polypropylene
- Available in 1 or 10 ul
- Available in rigid or flexible variants



Economic Inoculating Loops and Needles
Cat No. 13541412

- Made of Polystyrene
- Available in 1 ul/5 ul/10 ul
- Available in multiple colours such as clear, green, blue, red or yellow



T / L / Triangle Shaped Spreader
Cat No. 14143111

Cat No. 14442111

Cat No. 14744113

- 140 x 34 mm (T)
- 156 x 38 mm (L)
- 208 x 30 mm or 235 x 60mm (Triangle)



**Cotton/Viscose Swabs, Applicator
Cat No. 14971100**

- Available in the following:
- 1. Wood (with and without cotton tip)
- 2. Wood (Viscose tip)
- 3. Polystyrene (Cotton/polystyrene tip)
- Snappable Polystyrene



**Transport Swabs
Without Medium
Cat No. 15872100**

- Available with or without mediums:
- 1. Wood (Cotton or Viscose tips)
- 2. Polystyrene (Cotton tip)



**Transport Swabs
With Medium
Cat No. 16673100**

- Available with in following:
- 1. Polystyrene (Cotton tip)
- 2. Cary Blair Gel
- 3. Amies Gel with charcoal
- 4. Stuart Gel



**Transfer Pipette
Cat No. 17011101**

- 5 ml Capacity
- Graduated to 1 ml
- Large Bulb



**Transfer Pipette
Cat No. 17511201**

- 7 ml Capacity
- Graduated to 3 ml
- Large Bulb



**Transfer Pipette
Cat No. 18011301**

- 5 ml Capacity
- Graduated to 1 ml
- Large Bulb



**Transfer Pipette
Cat No. 18511401**

- 7 ml Capacity
- Graduated to 3 ml
- Large Bulb



**Transfer Pipette
Cat No. 19011501**

- 5 ml Capacity
- Graduated to 2 ml
- Large Bulb
- Suitable for blood banking



**Transfer Pipette
Cat No. 19611611**

- 6 ml Capacity
- Graduated to 1.5 ml
- Large Stem



**Transfer Pipette
Cat No. 20011701**

- 3 ml Capacity
- Graduated to 1 ml
- Short Stem



**Transfer Pipette
Cat No. 20512101**

- 1.5 ml Capacity
- Extended Tip
- Small Bulb



**Transfer Pipette
Cat No. 21012201**

- 5 ml Capacity
- Extended Tip
- Standard Bulb



**Transfer Pipette
Cat No. 21512301**

- 7 ml Capacity
- Extended Tip
- Large Bulb



**Transfer Pipette
Cat No. 22013201**

- 4 ml Capacity
- Short Stem



**Transfer Pipette
Cat No. 22513301**

- 4 ml Capacity
- Standard Tip
- Standard Bulb



**Transfer Pipette
Cat No. 23014201**

- 23 ml Capacity
- Extended Tip
- Large Bulb



**Transfer Pipette
Cat No. 23115101**

- 3 ml Capacity
- Paddle Pipette
- Bulk Purchase Available on request



Disposable Culture Tubes
Cat No. 23681111

- Available in 3/5/8/14 ml
- Rimless
- Round Bottom



Disposable Culture Tubes
Cat No. 24682141

- Available in 4/12 ml
- Rim with Round Bottom
- Dual Position Cap
- With Graduation for ease of reading



Drosophila Vials
Cat No. 2588720BS

- Wide Tubes made of Polypropylene or Polystyrene
- Sizes available are as follows:
 - a. 28.5 x 95mm
 - b. 25 x 95mm



Transport Tubes
Cat No. 26686110

- Screw Cap
- Free Standing Bottom
 - 5 ml
- Size are available in
 - a. 16 x 60 mm



Transport Tubes
Cat No. 26786120

- Screw Cap
- Free Standing Bottom
 - 10 ml
- Size are available in
 - a. 16 x 80 mm



Urine Tube
Cat No. 26881711

- Flared Opening
- Sediment Bulb
- Centrifuge Spin Rate : 1500 RPM
- Size 20 x 103 mm



Flange Cap
Cat No. 26989112N

- Polyethylene
- Flexible flanges to ensure leak proof seal
- Various colours to choose from

Dual Position Cap
Cat No. 27289412

- For culture tubes depending on aerobic or anaerobic requirements
- Polyethylene
- Sizes ranges from 12mm to 17mm



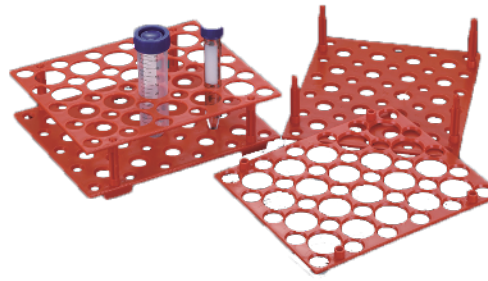
Snap Cap
Cat No. 27489810

- For Urine Tubes
- Polyethylene
- With lifting grip for easy opening



4 - way Microtube Rack
Cat No. 27489810

- Assorted colours
- Dimensions are as follows:
174 x 95 x 52 mm
- Suitable for autoclaving at 121°C



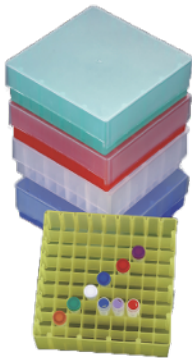
Snap Together Conical Tube Rack
Cat No. 27489810

- Easy-to-assemble polypropylene racks that snap together securely
- Design for stable use in water baths
- Features alpha numeric grid reference aids for tube identification



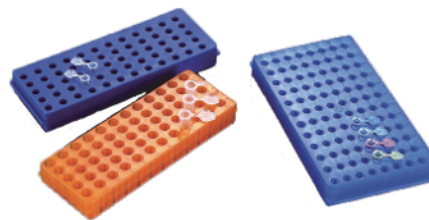
Compact Microtube Storage Box
Cat No. 27791200

- Fits 1.5 ml or 2 ml vials, tubes, microtubes
- Suitable for autoclaving at 121°C
- Comes in 100 well design



Compact Microtube Storage Box
Cat No. 27891281

- Fits 1.5 ml or 2 ml vials, tubes, microtubes
- Suitable for autoclaving at 121°C
- Comes in 81 well design



Reversible Racks for Microtubes
Cat No. 27891281

- Polypropylene, 60 /96 well
- One side holds 1.5 / 2 ml tubes and the other holds 0.5 / 0.7 ml
- Ideal for freezing and autoclaving
- Temperature range is between - 80°C to 121°C



One sided Rack for Microtubes
Cat No. 28191680

- Polypropylene, 60 well
- Ideal for freezing and autoclaving
- Temperature range is between - 80°C to 121°C



Snap Together Test Tube Racks
Cat No. 28291440W

- Features alpha numeric grid reference aids for tube identification
- 40 well
- 60 well
- 90 well



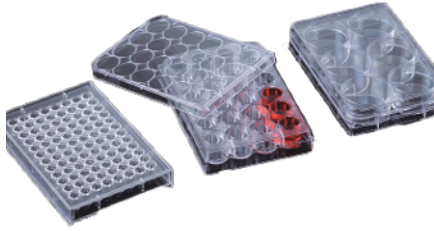
PCR Rack, with cover
Cat No. 28591710

- Dimensions : 125 x 85 x 31 mm
- Suitable for autoclaving at 121°C
- Features alpha numeric grid reference aids for tube identification



Petri Dishes
Cat No. 28655101

- Dimensions :
- 150 x 15 mm
 - 90 x 15 mm
 - 55 x 15 mm
- Comes with 2 or 3 compartments



Culture Plate
Cat No. 29459311

- Comes in 6 / 24 / 96 well options
- Flat bottoms as well as V bottoms are available



Weighing Boat
Cat No. 29993104

- Non anti static
- Comes in various colours
- Available in 7 / 30 / 100 / 250 ml
- Ideal for handling liquids and solids
- Recesses at corners facilitate controlled pour-off



Autoclave Bag
Cat No. 31166100

- Available in plain or printed
- Sizes are as follows:
310 x 660 mm
415 x 600 mm
610 x 810 mm



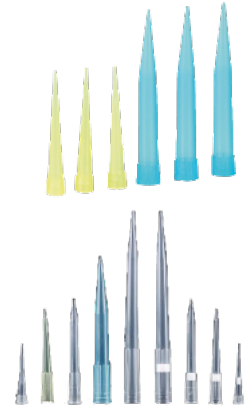
Specimen Bag with Document Wallet
Cat No. 32366200

- Available in plain or printed
- Sizes are as follows:
140 x 150 x 200 mm
225 x 150 x 200 mm



Mini Grip Style Bags
Cat No. 32766400

- Available in plain or printed
- Sizes are as follows:
115 x 115 mm / 100 x 140 mm
140 x 140 mm / 75 x 190 mm
125 x 190 mm / 190 x 190 mm
150 x 225 mm / 200 x 280 mm



Pipette Tips
Cat No. 34351110

- Available in Gilson / Eppendorf / MLA / Oxford
- Capacity of 5 to 10 ul / 1 - 200 ul / 100 - 1000 ul
- Graduated and bevelled



Storage Boxes for Slide
Cat No. 35992101

- 12 place
- ABS plastic
- 80 x 54 x 33 mm

- Cork lining prevents damage to stored slides



Storage Boxes for Slide
Cat No. 36092102

- 25 place
- ABS plastic
- 81 x 100 x 33 mm

- Cork lining prevents damage to stored slides



Storage Boxes for Slide
Cat No. 36192103

- 50 place
- ABS plastic
- 199 x 95 x 33 mm

- Cork lining prevents damage to stored slides



**Storage Boxes for Slide
Cat No. 36292104**

- 100 place
- ABS plastic
- 199 x 170 x 33 mm
- Cork lining prevents damage to stored slides



**Storage Boxes for Slide
Cat No. 36392114**

- 100 place
- ABS plastic
- 199 x 170 x 33 mm
- Hinged Pin
- Cork lining prevents damage to stored slides



**Slide Mailer, Plastic
Cat No. 36492202**

- 2 place
- Edge Opening
- Polypropylene, opaque, break-resistant
- Ideal for long term storage of slides



**Slide Mailer, Plastic
Cat No. 36592205**

- 5 place
- End Opening
- Polypropylene, opaque, break-resistant
- Ideal for long term storage of slides

DISINFECTANT





Hand Sanitiser, 10 ml
Cat No. H370LS6089-11

- 75% Alcohol
- Spray Bottle
- Effective in eliminating a wide range of microbes
- Suitable for keeping in bags due to small footprint



Hand Sanitiser, 100 ml
Cat No. H371LS6088-10

- 75% Alcohol
- Spray
- Effective in eliminating a wide range of microbes
- Suitable for home and office use



Hand Sanitiser, 118 ml
Cat No. H372LS6146-10

- 75% Alcohol
- Spray Bottle
- Effective in eliminating a wide range of microbes
- Suitable for home and office use



Hand Sanitiser, 236 ml
Cat No. H373LS6154-A

- 75% Alcohol
- Spray Bottle
- Effective in eliminating a wide range of microbes
- Suitable for heavy usage



Hand Sanitiser, 29 ml
Cat No. H374LS6092-10

- 75% Alcohol
- Disinfecting Gel
- Effective in eliminating a wide range of microbes
- Suitable for keeping in bags due to small footprint



Hand Sanitiser, 400 ml
Cat No. H375LS6162-10

- 75% Alcohol
- Industrial Spray with Nozzle
- Effective in eliminating a wide range of microbes
- Suitable for heavy, frequent usage



Hand Sanitiser, 470 ml
Cat No. H376LS6149-10

- 75% Alcohol
- Spray Bottle
- Effective in eliminating a wide range of microbes
- Suitable for heavy, frequent usage



Hand Sanitiser, 470 ml
Cat No. H377LS6163-10

- 75% Alcohol
- Industrial Spray with Nozzle
- Effective in eliminating a wide range of microbes
- Suitable for heavy, frequent usage



Hand Sanitiser, 30 ml
Cat No. H378LS6161-10

- 75% Alcohol
- Gel with hooks for ease of reach
- Effective in eliminating a wide range of microbes
- Suitable for every day use



Hand Sanitiser, 60 ml
Cat No. H379LS6084-10

- 75% Alcohol
- Disinfecting Gel
- Effective in eliminating a wide range of microbes
- Suitable for home and office use



Hand Sanitiser, 80 ml
Cat No. H380LS6083-10

- 75% Alcohol
- Moisturing Gel
- Effective in eliminating a wide range of microbes
- Suitable for home and office use



Hand Sanitiser, 100 ml
Cat No. H381LS6091-10

- 75% Alcohol
- Disinfecting Gel
- Effective in eliminating a wide range of microbes
- Suitable for home and office use



Hand Sanitiser, 236 ml
Cat No. H382LS6148-10

- 75% Alcohol
- Hand Pump with Disinfecting Gel
- Effective in eliminating a wide range of microbes
- Suitable for home and office use



Hand Sanitiser, 250 ml
Cat No. H383LS6090-10

- 75% Alcohol
- Hand Pump with Disinfecting Gel
- Effective in eliminating a wide range of microbes
- Suitable for home and office use



Hand Sanitiser, 470 ml
Cat No. H384LS6147-10

- 75% Alcohol
- Hand Pump with Disinfecting Gel
- Effective in eliminating a wide range of microbes
- Suitable for home and office use



Hand Sanitiser, 500 ml
Cat No. H385LS6151-10

- 75% Alcohol
- Hand Pump with Disinfecting Gel
- Effective in eliminating a wide range of microbes
- Suitable for heavy usage



Hand Sanitiser, 950 ml
Cat No. H386LS6153-10

- 75% Alcohol
- Hand Pump with Disinfecting Gel
- Effective in eliminating a wide range of microbes
- Suitable for heavy usage



Hand Sanitiser, 980 ml
Cat No. H387LS6144-10

- 75% Alcohol
- Hand Pump with Disinfecting Gel
- Effective in eliminating a wide range of microbes
- Suitable for heavy usage



Hand Sanitiser, 1000 ml
Cat No. H388LS6145-10

- 75% Alcohol
- Hand Pump with Disinfecting Gel
- Effective in eliminating a wide range of microbes
- Suitable for heavy usage



Hand Sanitiser, 29 ml
Cat No. H389LS6092-12

- 75% Alcohol
- Customisable Cover Design
- Effective in eliminating a wide range of microbes
- Suitable for personal usage



Hand Sanitiser, 60 ml
Cat No. H390LS6131-10

- 75% Alcohol
- Customisable Cover Design
- Effective in eliminating a wide range of microbes
- Suitable for personal usage



Hand Sanitiser, 800 ml
Cat No. H391LS6134-10

- 75% Alcohol
- Refill Pack
- Effective in eliminating a wide range of microbes
- Suitable for refill for home and office use



Hand Sanitiser, 5000 ml
Cat No. H3932LS6130-10

- 75% Alcohol
- Bulk Container
- Effective in eliminating a wide range of microbes
- Suitable for refill for heavy usages



Gift Set
Cat No. H393LS6130-11

- 75% Alcohol
- Gift Set
- Effective in eliminating a wide range of microbes
- Contains 60 ml spray, 10 ml gel and disinfecting wipes



Gift Set
Cat No. H394LS6130-12

- 75% Alcohol
- Gift Set
- Effective in eliminating a wide range of microbes
- Contains 10 ml spray, 60 ml gel and 80 ml moisturizing gel

COMMUNDES





Mobile Commode Chair
Cat No. G395KD698ALG04

- Aluminum Alloy
- 4 Inch Wheels
- Locks for individual wheels
- Removable Toilet Bucket
- Suitable for use in shower



Mobile Commode Wheelchair
Cat No. G396KDB8BLG22

- Aluminum Alloy
- 4 and 22 Inch Wheels
- Hand locks for 22 inch wheels
- Foot locks for 4 inch wheels
- Removable Toilet Bucket
- Suitable for use in shower



Mobile Commode Chair
Cat No. G397KDB699BLP12

- Aluminum Alloy
- 4 and 12 Inch Wheels
- Foot locks for 4 inch wheels
- Removable Toilet Bucket
- Suitable for use in shower



Commode Chair, Anti Tipping
Cat No. G398KDB631ALY03

- Aluminum Alloy
- Able to fold flat and adjustable
- 2 Inch Wheels
- Foot locks for individual wheels
- Removable Toilet Bucket with cushion
- Suitable for use in shower



Commode Chair, Anti Tipping
Cat No. G399KDB697ALY04

- Aluminum Alloy
- 4 Inch Wheels
- Foot locks for individual wheels
- Removable Toilet Bucket
- Suitable for use in shower



Commode Chair, Anti Tipping
Cat No. G400KDB697BLY04

- Aluminum Alloy
- 4 Inch Wheels
- Foot locks for individual wheels
- Removable Toilet Bucket
- Suitable for use in shower



Commode Chair
Cat No. G401KDB699ALP08

- Aluminum Alloy
- 4 and 8 Inch Wheels
- Foot locks for 4 inch wheels
- Removable Toilet Bucket with cushion
- Suitable for use in shower



Stationary Commode Chair
Cat No. G402KDB607BLY

- Aluminum Alloy
- Adjustable Height
- Removable Toilet Bucket with cushion
- Suitable for use in rooms and shower



Stationary Commode Chair
Cat No. G403KDB608BLY

- Aluminum Alloy
- Adjustable Height
- Removable Toilet Bucket
- Suitable for use in rooms and shower



Stationary Commode Chair
Cat No. G404KDB609AFT

- Powder Coated Steel
- Adjustable Height
- Removable Toilet Bucket with cushion
- Suitable for use in shower



Stationary Commode Chair
Cat No. G405KDB890AFT

- Powder Coated Steel with black finish
- Foldable
- Removable Toilet Bucket with seat
- Suitable for use in shower



Stationary Commode Chair
Cat No. G406KDB890BFT

- Powder Coated Steel with black finish
- Foldable
- Removable Toilet Bucket with cushion
- Suitable for use in shower



Stationary Commode Chair
Cat No. G407KDB890CLP

- Aluminum Alloy
- Adjustable Height
- Foldable
- Removable Toilet Bucket with seat
- Suitable for use in shower



Stationary Commode Chair
Cat No. G408KDB892AFT

- Powder coated Steel with grey finish
- Removable Toilet Bucket with seat
- Suitable for use in shower



Stationary Commode Chair
Cat No. G409KDB892BSP

- Stainless Steel with grey finish
- Removable Toilet Bucket with seat
- Suitable for use in shower



Stationary Commode Chair
Cat No. G410KDB892CFT

- Powder Coated Steel with grey finish
- Removable Toilet Bucket with black seat
- Suitable for use in shower



Stationary Commode Chair
Cat No. G411KDB4CFT

- Powder Coated Iron with grey finish
- Adjustable Height
- Removable Toilet Bucket with seat
- Suitable for use in shower



Stationary Commode Chair
Cat No. G412KDB895BLY

- Aluminum Alloy
- Adjustable Height
- Removable Toilet Bucket with seat
- Suitable for use in shower



Stationary Toilet Aid
Cat No. G413KDB897BSP

- Stainless Steel
- Foldable
- Suitable for use in shower



Stationary Commode Chair
Cat No. G414KDB898AFT

- Powder Coated Steel with white finish
- Removable Toilet Bucket with seat
- Suitable for use in shower



Stationary Commode Chair
Cat No. G415KDB898BLP

- Aluminum Alloy
- Adjustable Height
- Removable Toilet Bucket with seat
- Suitable for use in shower



Stationary Commode Chair
Cat No. G416KDB898CLP

- Aluminum Alloy
- Adjustable Height
- Removable Toilet Bucket with seat and cover
- Suitable for use in shower



Stationary Shower Aid
Cat No. G417KDB793ALY

- Aluminum Alloy
- Adjustable Height
- Non Slip Seat Pen
- Suitable for use during shower



Stationary Shower Aid
Cat No. G418KDB794ALG

- Aluminum Alloy
- Adjustable Height
- Non Slip Seat Pen
- Ergonomic Arm Rests
- Suitable for use during shower



Stationary Shower Aid
Cat No. G419KDB795ALG

- Aluminum Alloy
- Heavy Duty Structure
- Adjustable Height
- Non Slip Seat Pen
- Ergonomic Arm Rests
- Suitable for use during shower



Stationary Shower Aid
Cat No. G420KDB797ALY

- Aluminum Alloy
- Adjustable Height
- Non Slip Seat Pen
- Suitable for use during shower



Stationary Shower Aid
Cat No. G421KDB798ALY

- Aluminum Alloy
- Adjustable Height
- Non Slip Seat Pen with back rest
- Suitable for use during shower



Stationary Shower Aid
Cat No. G422KDB799ALY

- Aluminum Alloy
- Adjustable Height
- Non Slip Seat Pan
- U Shaped Adjustable Arm Rests
- Suitable for use during shower



Stationary Shower Aid
Cat No. G423KDB799ALY

- Aluminum Alloy
- Adjustable Height
- Non Slip Seat Pan
- L Shaped Arm Rests
- Suitable for use during shower



Stationary Shower Aid
Cat No. G424KDB799CLY

- Aluminum Alloy
- Adjustable Height
- Non Slip Seat Pan
- U Shaped Arm Rests
- Suitable for use during shower



Reciprocal Walking Frame
Cat No. G425KDB915ALY

- Aluminum Alloy
- Adjustable Height
- Top and Bottom Loaded Non Slip Handles



Reciprocal Walking Frame
Cat No. G426KDB916ALP

- Aluminum Alloy
- Adjustable Height
- Top Loaded Non Slip Handle



Rollator
Cat No. G427KDB919ALY05

- Aluminum Alloy
- Adjustable Height
- Hand Operated Front Brakes
- Foot Operated Rear Brakes



SMART Auxiliary Toilet Aid
Cat No. G460TL-18-AA

- Fall Alarm Sensor and Alert
- User Operated Lift System
- Bidet and drying function
- Remote Control function
- For use within toilet or with a removable bucket



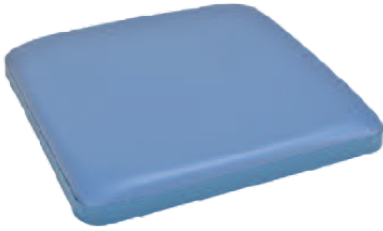
SMART Auxiliary Toilet Aid
Cat No. G460TL-18-A2

- User Alarm and Alert
- User Operated Lift System
- Remote Control function
- Leather or PVC Back Rest
- Power via battery or directly from socket
- For use within toilet or with a removable bucket



SMART Auxiliary Toilet Aid
Cat No. G460TL-18-A1

- User Alarm and Alert
- User Operated Lift System
- For use within toilet or with a removable bucket



Toilet Seat Cover
Cat No. G440KDB411
 - Cushion Cover
 - Blue



Toilet Seat Cover
Cat No. G441KDB412
 - Cushion Cover
 - Black



Toilet Seat Cover
Cat No. G442KDB404
 - Seat Cover
 - Blue
 - Removable Center Lid
 with Lifting Tab



Toilet Seat Cover
Cat No. G443KDB406
 - Seat Cover
 - Black
 - Removable Center Lid



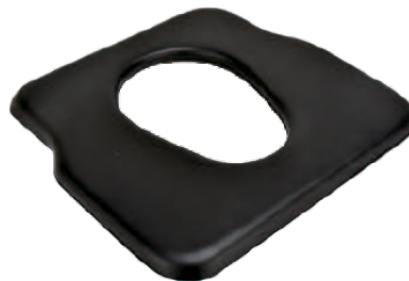
Toilet Seat Cover
Cat No. G444KDB405
 - Seat Cover
 - Blue
 - Removable Center Lid



Toilet Seat Cover
Cat No. G445KDB402
 - Seat Cover
 - Black
 - Removable Center Lid
 with Lifting Tab



Toilet Seat Cover
Cat No. G446KDB416
 - Seat Cover
 - Black



Toilet Seat Cover
Cat No. G447KDB415
 - Seat Cover
 - Black



Toilet Seat Cover
Cat No. G448KDB413
 - Seat Cover
 - Blue
 - Non Slip



Toilet Seat with Cover

Cat No. G449KDB414

- Seat Cover with Lid
- Blue
- Non Slip



Toilet Seat

Cat No. G450KDB421

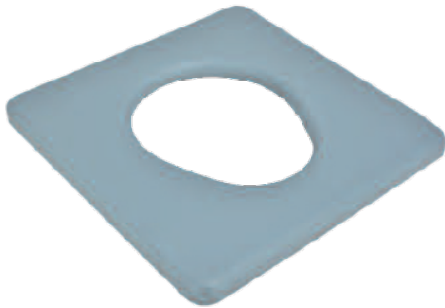
- Seat Cover
- Blue
- Non Slip
- Pre Cut Shape for Females



Toilet Seat

Cat No. G451KDB420

- Seat Cover
- Blue
- Non Slip
- Pre Cut Shape for Females



Toilet Seat

Cat No. G452KDB418

- Seat Cover
- Grey
- Non Slip
- Pre Cut Shape for Females



Toilet Seat with Cover

Cat No. G453KDB407

- Seat Cover
- Grey
- Non Slip



Toilet Seat

Cat No. G454KDB417

- Seat
- Grey
- Non Slip



Removable Bucket

Cat No. G455KDB423

- With Cover
- Dual Handle



Bed Pan

Cat No. G456KDB424

- With Cover
- Single Handle



Removable Bucket

Cat No. G457KDB422

- With Cover
- Single Handle
- Large and Splash Proof
- Configuration Available as well

WALKING AIDS





Walking Aid

Cat No. G428KDB911ALP

- Aluminum Alloy
- Adjustable Height
- Three Legged Support
- Foldable
- Seat for intermittent resting



Walking Stick

Cat No. G429KDB922ALP

- Aluminum Alloy
- Adjustable Height
- Black Finish



Walking Stick

Cat No. G430KDB922BLP

- Aluminum Alloy
- Adjustable Height
- Brown Finish



Walking Stick

Cat No. G431KDB922CLP

- Aluminum Alloy
- Adjustable Height
- Grey Finish



Crutches

Cat No. G432KDB925ALP

- Aluminum Alloy
- Adjustable Height
- Grey Finish
- Large Size



Crutches

Cat No. G433KDB925BLP

- Aluminum Alloy
- Adjustable Height
- Grey Finish
- Medium Size



Crutches

Cat No. G434KDB925CLP

- Aluminum Alloy
- Adjustable Height
- Grey Finish
- Small Size



Walking Aid

Cat No. G435KDB926ALP

- Aluminum Alloy
- Adjustable Height
- 4 Legged Support
- Non Slip Handle
- Chrome Finish



Walking Aid

Cat No. G436KDB926BLP

- Aluminum Alloy
- Adjustable Height
- 4 Legged Support
- Non Slip Handle
- Blue Finish



Walking Aid

Cat No. G437KDB927ALP

- Aluminum Alloy
- Adjustable Height
- 4 Legged Support
- L Shaped Non Slip Handle
- Grey Finish



Walking Aid

Cat No. G438KDB931ALP

- Aluminum Alloy
- Adjustable Height
- 4 Legged Support
- L Shaped Non Slip Handle
- Chrome Finish



Toilet Bowl Aid

Cat No. G439KDB502AFT

- Powder Coated Steel with white finish
- Adjustable Height
- Two Step Non Slip Handle Support System

HOSPITAL BEDDING





Multi-functional Nursing Bed

Cat No. G462MD-E51

- Back and Knee Lifting
- Left and Right Turning
- Manual Push / Pull Style for defecation hole
- Load Capacity < 250 KG



Multi-functional Nursing Bed

Cat No. G463MD-E52

- Widened and Rotating
- Back and Knee Lifting
- Left and Right Turning
- Manual Push / Pull Style for defecation hole
- Load Capacity < 250 KG



Multi-functional Nursing Bed

Cat No. G464MD-E55

- Back and Knee Lifting
- Left and Right Turning
- Manual Push / Pull Style for defecation hole
- Load Capacity < 250 KG



Multi-functional Nursing Bed

Cat No. G465MD-E56

- Back and Knee Lifting
- Left and Right Turning
- Manual Push / Pull Style for defecation hole
- Load Capacity < 250 KG



Multi-functional Nursing Bed

Cat No. G466MD-E07X

- Widened Frame
- Back and Knee Lifting
- Left and Right Turning
- Manual Push / Pull Style for defecation hole
- Load Capacity < 200 KG



Multi-functional Nursing Bed

Cat No. G467MD-E08X

- Back and Knee Lifting
- Left and Right Turning
- Manual Push / Pull Style for defecation hole
- Load Capacity < 200 KG



Multi-functional Nursing Bed

Cat No. G468MW1

Shape Dimensions:

2710 x 1060 x 560 mm

Wheelchair Dimensions:

Width 600 mm / Height 560 mm

Electromagnetic lock connecting wheelchair and bed firmly (Straight Tension > 120 KG)



Multi-functional Electric Nursing Bed

Cat No. G469MD-E09

- Back and Knee Lifting
- Left and Right Turning
- Load Capacity < 250 KG



Multi-functional Electric Nursing Bed

Cat No. G470MD-E20

- Rotating
- Back and Knee Lifting
- Left and Right Turning
- Load Capacity < 250 KG



Multi-functional Electric Nursing Bed

Cat No. G471MD-E36

- Back and Knee Lifting
- Left and Right Turning
- Electric Operation for defecation hole
- Load Capacity < 250 KG



Multi-functional Electric Nursing Bed

Cat No. G472MD-E39

- Back and Knee Lifting
- Left and Right Turning
- Electric Operation for defecation hole
- Load Capacity < 250 KG



Multi-functional Electric Nursing Bed

Cat No. G473MD-E04X

- Back and Knee Lifting
- Left and Right Turning
- Manual Push / Pull Style for defecation hole
- Load Capacity < 250 KG



Multi-functional Electric Nursing Bed

Cat No. G474MD-E06X

- Widened Frame
- Back and Knee Lifting
- Left and Right Turning
- Manual Push / Pull Style for defecation hole
- Load Capacity < 250 KG



Multi-functional Electric Nursing Bed

Cat No. G475MD-E101

- Latex Mattress
- Back and Knee Lifting
- Left and Right Turning
- Integral Lifting



Multi-functional Electric Nursing Bed

Cat No. G476MD-E102

- Latex Mattress
- Back and Knee Lifting
- Left and Right Turning
- Integral Lifting
- Electric Operation for defecation hole
- Load Capacity < 250 KG



Multi-functional Electric Nursing Bed

Cat No. G477MD-E20H

- Back and Knee Lifting
- Left and Right Turning
- Manual Push / Pull Style for defecation hole
- Load Capacity < 200 KG



Multi-functional Electric Nursing Bed

Cat No. G478MD-E20T

- Back and Knee Lifting
- Left and Right Turning
- Manual Push / Pull Style for defecation hole
- Load Capacity < 200 KG



Multi-functional Electric Nursing Bed

Cat No. G479MD-E23D

- Back and Knee Lifting
- Left and Right Turning
- Manual Push / Pull Style for defecation hole
- Load Capacity < 200 KG



Multi-functional Electric Nursing Bed

Cat No. G480MD-E31X

- Back Lifting
- Collapsible Stainless Steel Side Rails
- Load Capacity < 200 KG



Multi-functional Electric Nursing Bed

Cat No. G481MD-32XH

- Back and Knee Lifting
- Left and Right Turning
- Manual Push / Pull Style for defecation hole
- Load Capacity < 200 KG



Multi-functional Electric Nursing Bed

Cat No. G482MD-36SJ

- Back and Knee Lifting
- Left and Right Turning
- Electric Operation for defecation hole
- Load Capacity < 200 KG



Multi-functional Electric Nursing Bed

Cat No. G483MD-E39F

- Back and Knee Lifting
- Left and Right Turning
- Manual Push / Pull Style for defecation hole
- Load Capacity < 200 KG



Multi-functional Electric Nursing Bed

Cat No. G484MD-E58

- Back and Knee Lifting
- Left and Right Turning
- Electric Operation for defecation hole
- Load Capacity < 200 KG



Multi-functional Electric Nursing Bed

Cat No. G485MD-E62

- Back and Knee Lifting
- Left and Right Turning
- Manual Push / Pull Style for defecation hole
- Load Capacity < 200 KG



Multi-functional Electric Nursing Bed

Cat No. G486MD-Y02S

- Back and Knee Lifting
- Left and Right Turning
- Electric Operation for defecation hole
- Load Capacity < 200 KG
- Updated Castor with smoother movement



Multi-functional Electric Nursing Bed

Cat No. G487MD-Y03JK

- Back and Knee Lifting
- Left and Right Turning
- Electric Operation for defecation hole
- 4 ABS Hand Rails
- Load Capacity < 200 KG



Multi-functional Electric Nursing Bed

Cat No. G488MD-Y04

- Back and Knee Lifting
- Left and Right Turning
- Manual Push / Pull Style for defecation hole
- Load Capacity < 200 KG



**Multi-functional Electric
Nursing Bed**

Cat No. G489MD-Y02

- Back and Knee Lifting
- Left and Right Turning
- Manual Push / Pull Style for defecation hole
- Load Capacity < 250 KG



**Multi-functional Electric
Nursing Bed**

Cat No. G490MD-Y03

- Back and Knee Lifting
- Left and Right Turning
- Electric Operation for defecation hole
- Load Capacity < 250 KG



**Multi-functional Electric
Nursing Bed**

Cat No. G491MW-02

- Shape Dimensions:
2140 x 1060 x 560 mm
- Wheelchair Dimensions:
Width 590 mm / Height 560 mm
- Electromagnetic lock connecting
wheelchair and bed firmly (Straight
Tension > 120 KG)

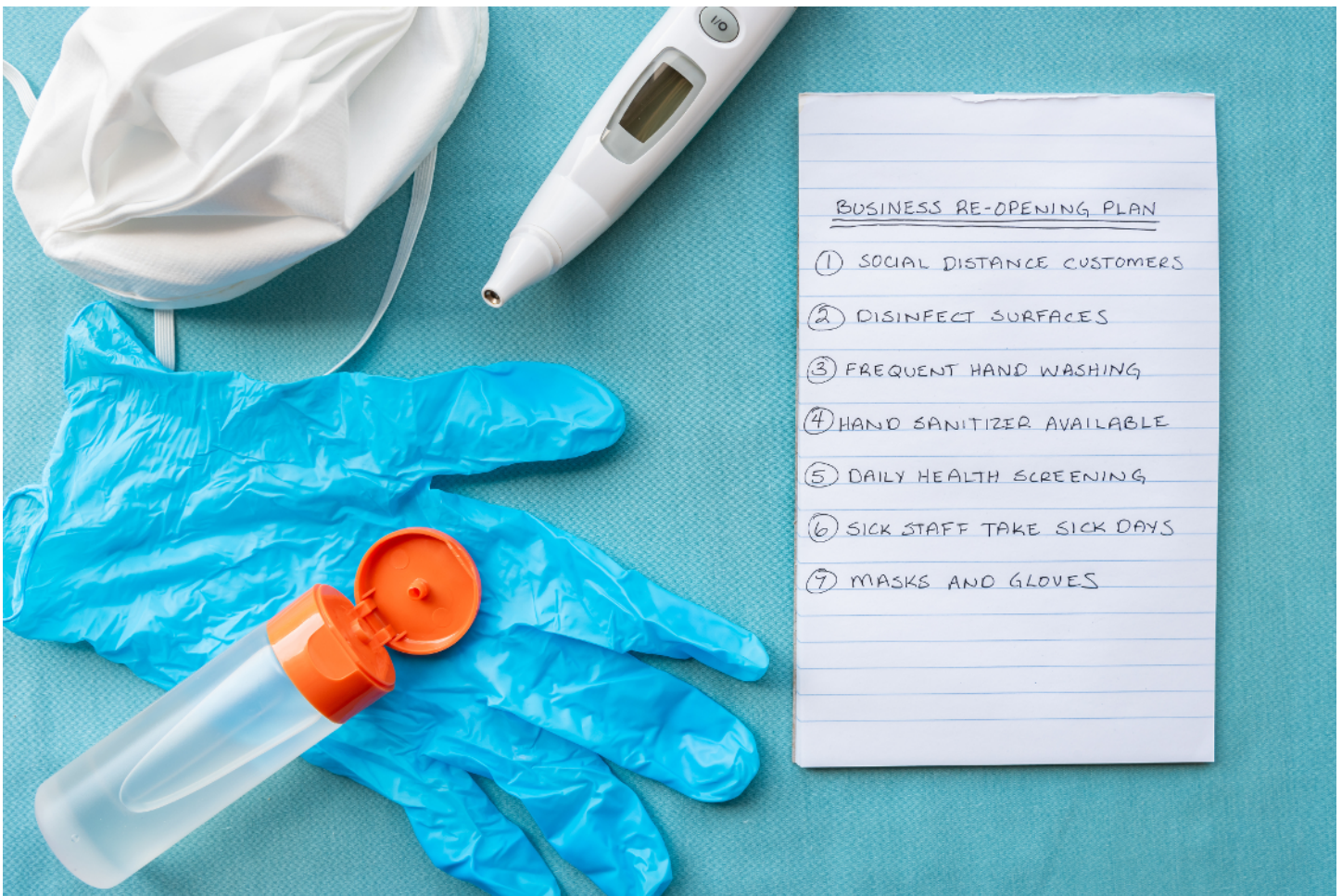


**Multi-functional Electric
Nursing Bed**

Cat No. G492MW-03

- Shape Dimensions:
2060 x 1130 x 560 mm
- Wheelchair Dimensions:
Width 590 mm / Height 560 mm
- Electromagnetic lock connecting
wheelchair and bed firmly (Straight
Tension > 120 KG)

CONSUMABLES





Infrared Handheld Thermometer

Cat No. H395IFHT-01

- No Contact Required
- Quick and Accurate (+/- 0.2°C)
- Measuring Distance 3 cm to 5 cm
- Back lit with 3 colour indication (Normal / Critical / Fever)



Infrared Handheld Thermometer

Cat No. H396IFHT-02

- No Contact Required
- Quick and Accurate (+/- 0.2°C)
- Measuring Distance 3 cm to 5 cm
- Back lit LED screen



Infrared Handheld Thermometer

Cat No. H397IFHT-03

- No Contact Required
- Quick and Accurate (+/- 0.2°C)
- Measuring Distance 5 to 10 cm
- Response Time 0.5s
- Back lit LED screen



2 in 1 Dispenser, 1000 ml

Cat No. H398HHD-01

- Sanitiser Dispenser
- Hands free Thermometer
- Able to hold up to 1000 ml of liquid



Dispenser, 1000 ml

Cat No. H399HHD-02

- Hands free Dispenser
- Able to hold up to 750 ml to 1000 ml of liquid



Dispenser, 1000 ml

Cat No. H399HHD-02

- Hands free Dispenser and Atomiser
- Able to hold up to 750 ml to 1000 ml of liquid



Hand Splint

Cat No. H401HSB-01

- Multiple Adjustment Straps
- Antimicrobial Fabric
- Can be used as a night splint



Thoraco-Lumbo-Sacral-Orthosis Back Brace

Cat No. H402HSB-02

- Lightweight and low profile
- Covers and limits T3 to S1 vertebra
- Helps better promote healing while maximising one's control and comfort



Rigid Lumbar Back Brace

Cat No. H403HSB-03

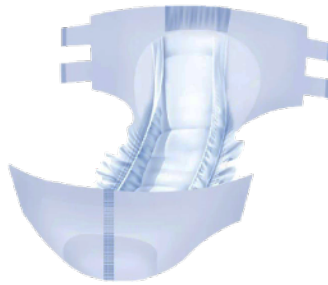
- Universal / Size Adjustable Belt
- Low Profile and Discreet
- Breathable and hypoallergenic material
- Anatomical Immobilisation to protect injured ligaments and / or muscles



Knee Brace

Cat No. H404HBS-04

- Straps to aid compression and stability
- Medical Grade Material
- Suitable for either knee



Adult Diapers

Cat No. G493GD-01

- Unisex Design
- Medical Grade
- Appropriate for heavy urinary and bowel incontinence
- Anti Leak Dual Layer Body Contouring

ANTIMICROBIAL AND ANTIVIRAL COATING





Operon Metamaterial Antiviral & Antimicrobial Spray Cat No. H405AMAV-001

- Antiviral and Antimicrobial Coating for hard and textile surfaces
- Effective on multiple strains of bacteria, viruses and fungi
- Effective on Clostridium Difficile as well
- Lasts for a minimum of 90 days

Technologies Comparison

Technologies Comparison	Active Matter Releasing Model	Instant Disinfection (Last up to 30 mins)			Sustained Releasing (Last up to 30 days)			Long Term Effect (Last up to years)		
		Germ	Virus	Mildew	Germ	Virus	Mildew	Germ	Virus	Mildew
Advanced Future Hygienic Solution	Generated	▲	▲	▲	✓	✓	✓	✓	✓	✓
Quaternary Ammonium Salts (BZK/BAC)	Instant	✓	✗	✗	✗	✗	✗	✗	✗	✗
Alcohols, Phenols (Medical alcohol)	Instant	✓	✓	✗	✗	✗	✗	✗	✗	✗
Chlorine (Hypochlorous acid, Chlorine oxide)	Instant	✓	✓	✓	✗	✗	✗	✗	✗	✗
Sustained Releasing (BZK, Chlorine oxide in polymer)	Stored	✓	✓	✗	▲	▲	✗	✗	✗	✗

✓ Full Effect
 ✗ No Effect
 ▲ Conditional

COMPARISON BETWEEN LOCAL COMPETITORS

OPERON ANTI-MICROBIAL COATING	COMPETITOR 1	COMPETITOR 2
Active Ingredient – Titanium Dioxide	Active Ingredient – Quaternary Ammonium Compound (QACs)	Active Ingredient – Quaternary Ammonium Compound (QACs)
Reduces and Kills through Photocatalytic Oxidative Stress (Using Visible Light too)	Disruption of bacterial enzymes and cell membranes by positively charged polymers, causing 'holes' in cell wall inducing death	Disruption of bacterial enzymes and cell membranes by positively charged polymers, causing 'holes' in cell wall inducing death
Effective on multiple strains of bacteria, viruses and fungi such as: 1. Influenza A Virus H3N2 2. Influenza A Virus H1N1 3. Coronaviruses 4. Escherichia coli 5. Legionella pneumophila 6. Methicillin-resistant staphylococcus aureus 7. Hemolytic streptococcus 8. Klebsiella pneumoniae 9. Listeria monocytogenes 10. Salmonella typhimurium 11. Aspergillus niger 12. Clostridium Difficile	Kills multiple strains bacteria, fungi and viruses but not effective on: 1. Clostridium Difficile (Spore state)	Kills multiple strains bacteria, fungi and viruses but not effective on: 1. Clostridium Difficile (Spore state)
Coating remains on surface for long periods of time (minimum of 90 days; with regular coating it will last for years)	Coating remains on surface for maximum of 30 days	Coating remains on surface for maximum 60 days
No known issues with resistance	Certain strains of bacteria have been shown to gain resistance against QACs	Certain strains of bacteria have been shown to gain resistance against QACs
Environmentally friendly and non-toxic for users' health and no dilution is required before use	Requires dilution to prevent irritation and burns for users, prolonged exposure leads to respiratory issues without proper protective equipment	Requires dilution to prevent irritation and burns for users, prolonged exposure leads to respiratory issues without proper protective equipment
Extremely effective adhesion on hard surfaces and textiles, having no impact on the microbicidal aspects	Tendency for QACs to remain on cloth is higher, as such surface does not receive as much QACs thus leading them to be less microbicidal	Tendency for QACs to remain on cloth is higher, as such surface does not receive as much QACs thus leading them to be less microbicidal



Contact Us



(+65) 6980 0543/44

sales@operonsg.com

www.operonsg.com

81 Ubi Avenue 4 #07-15

Singapore 408830